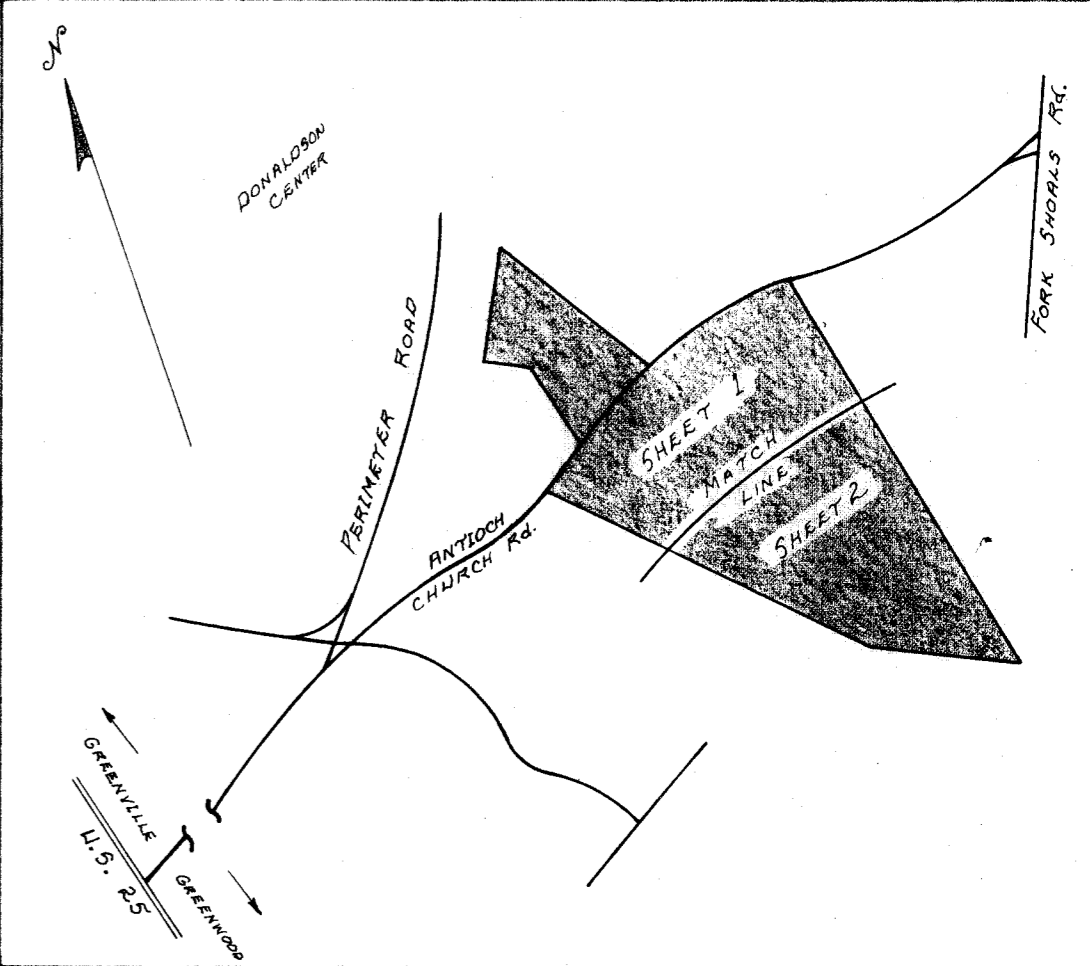
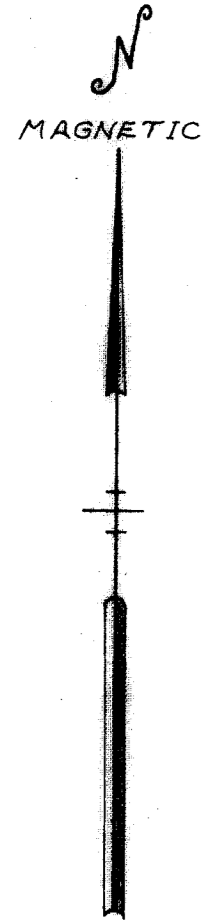
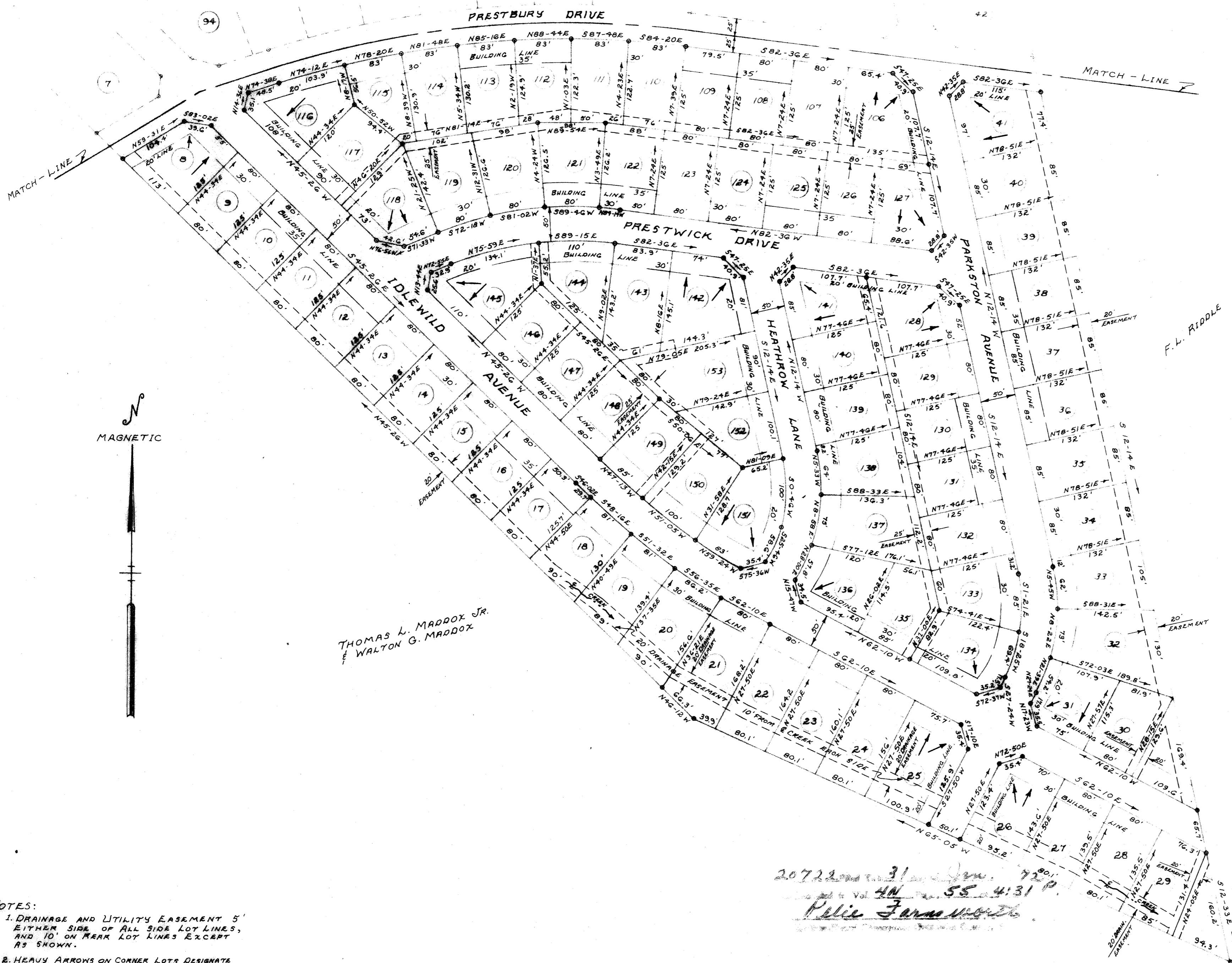


FILED
GREENVILLE CO. S. C.
JAN 31 4 21 PM '72
OLIVE EARNSWORTH
R.H.C.



SEE SHEET 1



THOMAS L. MADDOX JR.
& WALTON G. MADDOX

CERTIFICATE OF APPROVAL FOR RECORDING
I hereby certify that the subdivision plat shown hereon has been found to comply with the Subdivision Regulations for Greenville County, with the exception of such variances, if any, as are noted in the minutes of the Greenville County Planning Commission of Greenville County, South Carolina, and that it has been approved for recording in the office of the County Register of Deeds & Conveyances.
1 17 72
1 17 72
1 17 72
G. J. Riddle
1/17/72

CERTIFICATE OF APPROVAL FOR RECORDING
I hereby certify that the subdivision plat shown hereon has been found to comply with the Subdivision Regulations for Greenville County, with the exception of such variances, if any, as are noted in the minutes of the Greenville County Planning Commission of Greenville County, South Carolina, and that it has been approved for recording in the office of the County Register of Deeds & Conveyances.
1/17/72
G. J. Riddle

CERTIFICATE OF APPROVAL FOR RECORDING
I hereby certify that the subdivision plat shown hereon has been found to comply with the Subdivision Regulations for Greenville County, with the exception of such variances, if any, as are noted in the minutes of the Greenville County Planning Commission of Greenville County, South Carolina, and that it has been approved for recording in the office of the County Register of Deeds & Conveyances.
JAN. 28 1972
J. Bluman Lowe
Greenville County Planning Commission

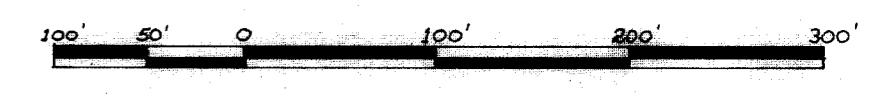
FINAL PLAT
FILE NUMBER 71-108

IDLEWILD

IDLEWILD TRUST enwright associates
OWNER ENGINEER - SURVEYOR
GREENVILLE, S. C.

NO OF ACRES 57.86 MILES OF NEW ROADS 1.7
NO OF LOTS 176 DATE JAN. 17, 1972
ERROR OF CLOSURE 1/4664

SCALE 1" = 100'



- NOTES:
1. DRAINAGE AND UTILITY EASEMENT 5' EITHER SIDE OF ALL SIDE LOT LINES, AND 10' ON REAR LOT LINES EXCEPT AS SHOWN.
2. HEAVY ARROWS ON CORNER LOTS DESIGNATE DIRECTION DWELLING MUST FACE.
3. IRON PINS AT ALL LOT CORNERS.

20722
31
55 4:31 PM
Olive Earnsworth

PERFORMANCE BOND (OPTION) FOR RECORDATION APPROVAL
The county and its maintenance will take place on and over this plat until the release of this bond.
Bon. Released
Director of Planning
Greenville County
Planning Commission

4N-55
SHEET 2 OF 2

FILE NUMBER 71-108